



Transporter 6.1 Kombi





Kombi 6.1

Transporter 6.1 Kombi Specifications

X = standard O = optional - = not available

| Kombi Specification | Kombi Trendline 2.0 TDI 81kW SWB | Kombi Trendline 2.0 TDI 110kW DSG® SWB | Kombi Trendline Plus 2.0 BiTDI 146kW DSG® 4Motion SWB |
|--|--|--|---|
| Engine | | | |
| Cylinders | 4 | 4 | 4 |
| Capacity (cm³) | 1968 | 1968 | 1968 |
| Output (kW @ r/min) | 81 @ 3,200 - 4,250 | 110 @ 3,250 - 3,750 | 146 @ 3,800 - 4,000 |
| Torque (Nm @ r/min) | 250 @ 1,250 - 3,100 | 340 @ 1,500 - 3,000 | 450 @ 1,400 - 2,400 |
| CO² emissions (g/km)** | 179 | 175 | 214 |
| Transmission | | | |
| 5-speed manual | X | - | - |
| 7-speed DSG® | - | X | X |
| Performance | | | |
| Acceleration in seconds (0-100 km/h) | 15,5 | 12,0 | 9,8 |
| Fuel Consumption | | | |
| Urban cycle (litres/100 km)** | 8,1 | 7,7 | 10,0 |
| Extra-urban cycle (litres/100 km)** | 5,7 | 5,4 | 6,4 |
| Combined cycle (litres/100 km)** | 6,9 | 6,6 | 8,2 |
| Running Gear | | | |
| Reinforced suspension and shock absorption (suitable for rough roads), permissible front axle load: 1 680 kg | X | X | X |
| Brakes | | | |
| ESC (Electronic Stability Control) | X | X | X |
| ABS (Anti-lock Braking System) | X | X | X |
| MCB (Automatic Post-Collision Braking System) | X | X | X |
| ASR (Anti-slip Regulation) | X | X | X |
| EDL (Electronic Differential Lock) | X | X | X |
| TCS (Traction Control System) | X | X | X |
| Hill Hold Control | X | X | X |
| Wheelrims / Tyres | | | |
| 16" 'Clayton' alloy wheels with 215/65 R16 C 106/104T tyres | X | - | - |
| 17" 'Devonport' alloy wheels with 235/55 R17 103W XL tyres | - | X | - |
| 17" 'Aracaju' alloy wheels with 235/55 R17 103W XL tyres | - | - | X |
| Full-sized spare wheel (steel) | X | X | X |
| Tool kit and jack, heavy-duty, for vehicles with 3.2 t gross vehicle weight rating | X | X | X |

Transporter 6.1 Kombi Specifications

X = standard O = optional - = not available

| Kombi Specification | Kombi Trendline 2.0 TDI 81kW SWB | Kombi Trendline 2.0 TDI 110kW DSG® SWB | Kombi Trendline Plus 2.0 BiTDI 146kW DSG® 4Motion SWB |
|--|--|--|---|
| Dimensions / Capacities | | | |
| Fuel tank (litres) | 80 | 80 | 80 |
| Length (mm) | 5006 | 5006 | 5006 |
| Width excl. mirrors (mm) | 1904 | 1904 | 1904 |
| Width incl. mirrors (mm) | 2297 | 2297 | 2297 |
| Height (mm) | 1990 | 1990 | 1990 |
| Wheelbase (mm) | 3000 | 3000 | 3000 |
| Overhang - front (mm) | 908 | 908 | 908 |
| Overhang - rear (mm) | 993 | 993 | 993 |
| Ground clearance (mm) | 201 | 201 | 201 |
| Approach angle (degrees) | 21,2 | 21,2 | 21,2 |
| Ramp angle (degrees) | 13,7 | 13,7 | 13,7 |
| Departure angle (degrees) | 16,2 | 16,2 | 16,2 |
| Turning circle (m) | 11,9 | 11,9 | 11,9 |
| Passenger compartment length (mm) | 2572 | 2572 | 2572 |
| Passenger compartment width (mm) | 1219 | 1219 | 1219 |
| Passenger compartment height (mm) | 1335 | 1335 | 1335 |
| Passenger and load compartment area (m²) - seats removed | 4,3 | 4,3 | 4,3 |
| Passenger and load compartment volume (m³) - seats | 5,8 | 5,8 | 5,8 |
| Sliding door width x height (mm) | 1017 x 1261 | 1017 x 1261 | 1017 x 1261 |
| Tailgate width x height (mm) | 1438 x 1276 | 1438 x 1276 | 1438 x 1276 |
| Gross vehicle mass (GVM) (kg) | 3080 | 3080 | 3080 |
| Unladen weight minimum (kg) | 1797 | 1892 | 2043 |
| Payload maximum (kg) | 1283 | 1188 | 1037 |
| Axle load limit - front/rear (kg) | 1550/1400 | 1610 / 1515 | 1610 / 1515 |
| Trailer weight, 12% gradient - braked/unbraked (kg) | 2200 / 750 | 2500 / 750 | 2500 / 750 |
| Gross train weight (kg), 12% gradient | 4900 | 5300 | 5300 |
| Roof load limit (kg) | 100 | 100 | 100 |
| Trailer nose weight (kg) | 100 | 100 | 100 |
| Seats | | | |
| Number of seats | 8 | 8 | 8 |
| 3 individual seats in 2nd row of seats with individually folding backrests and Easy Entry on outer seats | X | X | X |
| 3-seater bench (folding and tipping) in 3rd row of seats | X | X | X |
| Armrests for passenger and driver's seat | X | X | X |
| Comfort seat for driver and front passenger (incl. height-adjustment, armrests and lumbar support) | X | X | X |
| Height-adjustable head restraints - front and rear | X | X | X |
| "Bricks" fabric seat trim covers | X | X | X |
| Modular seat mounting system | X | X | X |

Transporter 6.1 Kombi Specifications

X = standard O = optional - = not available

| Kombi Specification | Kombi Trendline 2.0 TDI 81kW SWB | Kombi Trendline 2.0 TDI 110kW DSG® SWB | Kombi Trendline Plus 2.0 BiTDI 146kW DSG® 4Motion SWB |
|---|--|--|---|
| Windows | | | |
| Electric windows | X | X | X |
| Heated rear window with window wiper and washer system | X | X | X |
| Sliding windows in front of passenger area | X | X | X |
| Fixed windows in rear of passenger area | X | X | X |
| Heat-insulating glass (green) | X | X | X |
| Heat-insulating windshield made of laminated glass | X | X | X |
| Mirrors | | | |
| Electrically adjustable and heated exterior mirrors | X | X | - |
| Electrically adjustable, heated and folding exterior mirrors, folding possible via vehicle key | - | O | X |
| Wiper System | | | |
| Windshield wiper with intermittent control, 4 stages | X | X | X |
| Safety | | | |
| Driver and front passenger airbags (incl. front passenger deactivation) | X | X | X |
| Crosswind Assist NEW | X | X | X |
| Power-operated child safety lock | X | X | X |
| ISOFIX child seat anchorage points in 2nd row of seats | X | X | X |
| Warning buzzer and light for driver seatbelt not fastened | X | X | X |
| Rest Assist (fatigue detection) | X | X | X |
| First aid kit and warning triangle | X | X | X |
| Security | | | |
| Anti-theft alarm system with interior monitoring, backup horn and towing protection | X | X | X |
| 2 remote-controlled folding keys, central locking with interior release mechanism | X | X | X |
| Single-tone horn | X | X | X |
| Audio and Communication | | | |
| Radio "Composition Colour" with 16.51 cm (6.5-inch) color touch screen | X | X | X |
| Cell phone interface | X | X | X |
| 2 USB interfaces (type C) in dashboard | X | X | X |
| 6 speakers (2 tweeters, 2 woofers, 2 full-range speakers) | X | X | X |
| Interior Features | | | |
| Electromechanical speed-sensitive power steering, height and longitudinally adjustable steering column NEW | X | X | X |
| Leather*-wrapped multi-function steering wheel (3-spoke) | X | X | X |
| Cruise control | O | X | X |
| Climatic® air-conditioning system in cab, including rear passenger compartment with electronic control, 2nd evaporator and 2nd heating in passenger compartment with ventilation | X | X | - |
| Climatronic® air-conditioning system in cab, including rear passenger compartment with 2nd evaporator, 2nd heating system, headliner and additional controls in passenger compartment | - | - | X |

Transporter 6.1 Kombi Specifications

X = standard O = optional - = not available

| Kombi Specification | Kombi Trendline 2.0 TDI 81kW SWB | Kombi Trendline 2.0 TDI 110kW DSG® SWB | Kombi Trendline Plus 2.0 BiTDI 146kW DSG® 4Motion SWB |
|---|--|--|---|
| Interior Features continued | | | |
| Multi-function display plus with black and white display | X | X | X |
| Folding grab handle in front | X | X | X |
| Standard dashboard (lower part in colour Palladium) | X | X | X |
| Sun visors with mirror and airbag label on front passenger sun visor | X | X | X |
| Door pockets with 2 compartments each and integrated bottle holders in cab doors | X | X | X |
| Interior lighting with LED technology in load/passenger compartment | X | X | X |
| Sunshades for side windows in passenger area | X | X | X |
| Smokers' package: 12V socket with cigarette lighter, ashtray and 2 cup holders in dashboard | X | X | X |
| Rubber floor covering in cab and passenger area | X | X | X |
| Step illumination in passenger area | X | X | X |
| Plastic trunk sill protection | X | X | X |
| 12V socket | X | X | X |
| Lashing rings for load restraint | 6 | 6 | 6 |
| Exterior Features | | | |
| Body-coloured bumpers | X | X | X |
| Body-coloured exterior mirror housings and door handles | X | X | X |
| Park Distance Control - front and rear | X | X | X |
| Rear-view camera system (static lines) | X | X | X |
| Sliding doors - left and right (manually operated) | X | X | X |
| H7 twin halogen headlamps | X | X | - |
| LED headlamps with LED separate daytime running light | O | O | X |
| Headlight-range adjustment (automatic with LED headlights) | X | X | X |
| Rear fog light | X | X | X |
| Separate daytime running lights (permanently switched on during driving) | X | X | X |
| Unpainted radiator grille with 2 chrome trims | X | X | X |
| Fixed tow bar (incl. trailer stabilisation) | X | X | X |
| Mounting points for roof rack systems | 8 | 8 | 8 |
| Options | | | |
| Trailer manoeuvring system with park distance control in front and rear and rear view camera system (dynamic lines) | - | O | O |
| Radio-Navigation system Discover Pro with Digital Cockpit | - | - | O |
| Lights & Vision package | - | O | O |
| Front fog lights | O | O | O |
| Cruise control system including speed limiter | O | X | X |
| Carpet floor covering in cab and passenger area | O | O | O |

Transporter 6.1 Kombi Specifications

X = standard O = optional - = not available

| Kombi Specification | Kombi Trendline 2.0 TDI 81kW SWB | Kombi Trendline 2.0 TDI 110kW DSG® SWB | Kombi Trendline Plus 2.0 BiTDI 146kW DSG® 4Motion SWB |
|---|--|--|---|
| Options (continued) | | | |
| LED headlamps and LED rear position lamps with headlamp washer system | - | O | X |
| Metallic paint | O | O | O |
| 'Heritage' dual-colour paint | O | O | O |
| Lane change system Side Assist and rear traffic alert | - | O | O |
| 17-inch Woodstock alloy wheel | - | - | O |
| Leatherette "Mesh" Titanium Black | O | O | O |
| High Beam control | - | O | O |
| Guarantees | | | |
| 3-year / 120,000 km manufacturer warranty | X | X | X |
| 5-year / 60,000 km Genuine EasyDrive Maintenance Plan | X | X | X |
| 15,000 km service intervals | X | X | X |
| 12-year anti-corrosion warranty | X | X | X |

Disclaimer

*A combination of leather and high quality durable materials

All diesel vehicles require low sulphur grade diesel of 50 ppm or lower.

Fuel consumption and CO² emissions values were obtained in accordance with the prescribed uniform measuring standard (SANS 20101: 2006 / ECE R101: 2005 in its currently applicable version). The verified values do not apply to a specific vehicle and do not constitute part of the product offer. They are provided solely for the purposes of comparison between different vehicle models. Because of the need to maintain strict comparability of results achieved by the standard tests, they cannot be fully representative of real-life driving conditions. Variations in driving styles and in road, vehicle and ambient conditions, will have a bearing on the results achieved on the road. For these reasons consumption achieved on the road will not necessarily accord with these verified values.

Based on lightest variable (no options) and 90% tank filling. Weight may vary depending on options fitted to vehicle.

Dimensions, capacities and abilities apply to standard vehicles.

The above information was effective as at July 2023 and is subject to change.



Availability of exterior paint finishes will vary from images shown.

Enjoy the best **of all worlds**

The Transporter 6.1 Kombi is ideal for families, companies and social groups.

Be it for an airline, hotel or shuttle company, it's the smart way to transport up to eight people in comfort and style. With the Kombi you're ready to go the distance. After all, who knows where your next venture may take you?



Local vehicle specifications may differ from model shown.

Why choose?

Complete with 3 powerful engine options (81kW, 110kW and 146kW), the Kombi 6.1 lets you blaze new trails on business and family adventures. Its versatile seating arrangements, extra storage and host of electronic features let you accomplish the most at work and play. Additionally, the 4MOTION system is now standard on the 146kW Trendline Plus.



Refreshing **good looks**

The Kombi's bold redesign features a new colour palette, twin halogen headlights and LED tail light clusters providing a striking rear light signature.



Reliability you can **take for granted**



Local vehicle specifications may differ from model shown.

Quality is tradition with the T6.1 range.

As you'd expect, the Kombi 6.1 is built to last with a highly stable body, durable materials and exceptional workmanship.



Local vehicle specifications may differ from model shown.

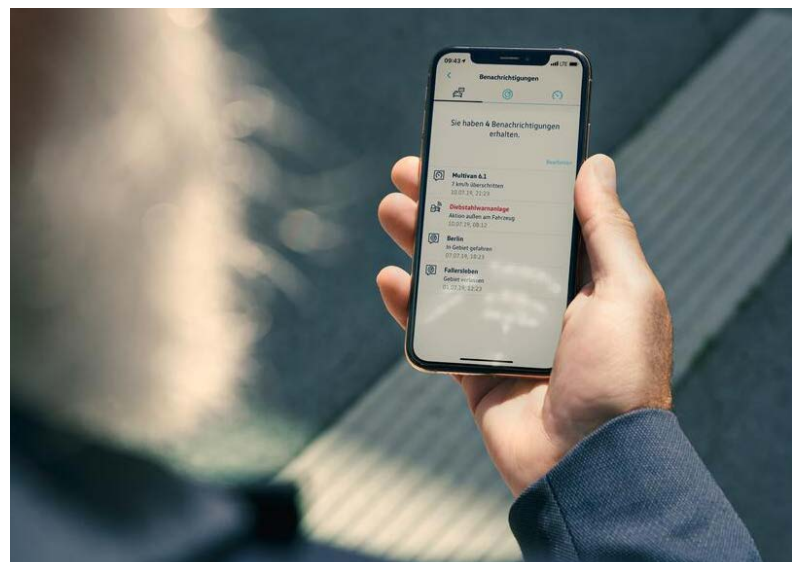
Technology that **works for you**

Connectivity

Keep in touch with your family, friends and business with the help of the latest infotainment systems and WeConnect Go.

Control

The electromechanical, speed-sensitive power steering offers active and adaptive support in almost all driving situations. The smart steering can be used to control a range of advanced driver assist systems. Drive comfortably with a height and longitudinally adjustable steering column.





Safety comes first

State-of-the-art driver assist systems include: crosswind and park distance control, post-collision braking system and tyre pressure monitor, side and curtain airbags for the driver and front passenger, windshield wiper intermittent control with rain sensor and washer fluid level indicator. The rear view camera is standard.



Local vehicle specifications may differ from model shown.



Connectivity is standard

Local vehicle specifications may differ from model shown.



All Kombi versions include a radio system, interior lighting with LED technology and climatic semi-automatic air conditioning. Climatronic air conditioning is standard on the 146kW model.

International model shown, local specification might differ.



Local vehicle specifications may differ from model shown.

Unwind while **you drive**

The efficient driver workplace, electromechanical power steering, newly designed dashboard, driver's seat with lumbar support and excellent all-round visibility ensure a relaxed, stress-free driving experience.



Local vehicle specifications may differ from model shown.

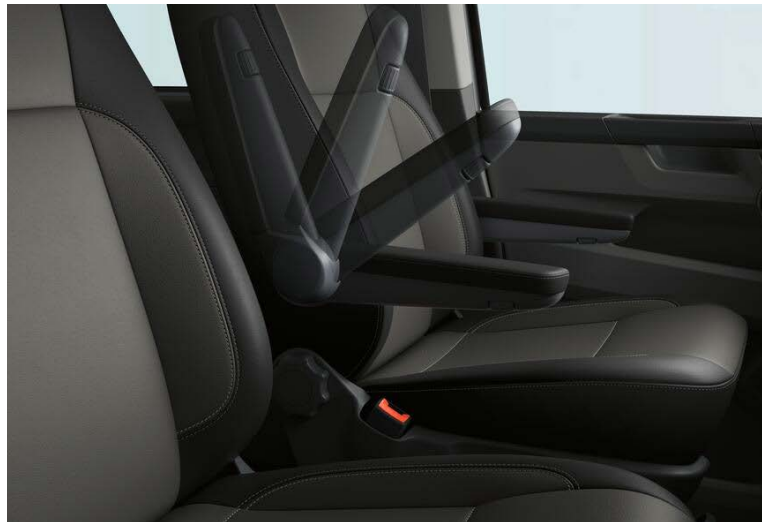


Built for **big business**

Whether you're transporting active kids or corporate cargo, you'll need a vehicle that's both stylish and space efficient.

The Kombi 6.1 offers just that with folding armrests, excellent noise insulation, LED reading lights, extra head and legroom, intelligently arranged controls, solid feel switches and attractive trims.

Local vehicle specifications may differ from model shown.



Networking on-the-go

Local vehicle specifications may differ from model shown.



Kombi 6.1 is available to order with an optional digital cockpit, which features a high-resolution 10.25-inch display. It also features the latest touch-screen radio and navigation systems with App-Connect, WeConnect Go and Bluetooth® to keep you informed while you're on the move.

Local vehicle specifications may differ from model shown.



Local vehicle specifications may differ from model shown.

Smart seating **easy living**

The interior of the Kombi 6.1 is ready for any outing – from weekend trips to deliveries and shuttle services.

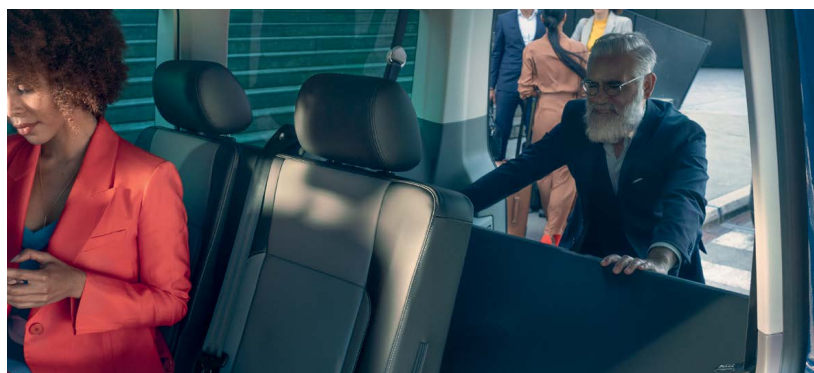
The 'easy-entry' seating lets your passengers kick back and relax. But it's the Kombi's flexibility that really sets it apart. The standard seating for eight (including the driver) can be configured in multiple layouts or completely removed to create a generous load area. All seats feature three-point inertia-reel seatbelts and adjustable head restraints. ISOFIX child seat mountings can be found on the second row. Even with a full house, the Kombi's rear luggage space and handy storage compartments mean there's room for unexpected extras.

Create space in three steps:

Fold down the backrests. All backrests on the benches and single seats in the passenger compartment can be folded down.

Double-fold the seats. The three-seater bench seat in the third seat row can be folded double. This feature can be used to increase the size of the luggage compartment.

Remove the seats. All bench and other seats can be removed without tools. This means the Kombi is ready for all transport jobs in an instant. The fastening rings in the vehicle floor can be used to secure cargo.



Local vehicle specifications may differ from model shown.



Local vehicle specifications may differ from model shown.

Go where **the action is**



The hard-wearing Kombi shines at any event.

After a soccer match, a school run, or on the way to work? Muddy shoes? The rubber floor covering is easily cleaned. Dirty hands? The interior trim can be wiped clean. Going on a short break? The tailgate provides shelter from sunshine and rain.



Local vehicle specifications may differ from model shown.



Local vehicle specifications may differ from model shown.

Stay connected **to what matters**

Enjoy the power of connectivity at your fingertips with state-of-the-art infotainment systems and the optional digital cockpit. The 10.25-inch display boasts intense colours and bright, high-contrast imagery. The digital cockpit (optional on 146kW model) is operated via the touch display of the infotainment system and the leather trimmed, multi-function steering wheel. Fitted as standard, the composition colour radio system features a 6.5-inch TFT touch-screen colour display, two USB (type-C) ports, bluetooth, SD card slot and six speakers. The high-resolution digital cockpit is perfect for listening to music, making calls or navigating.



Peace of mind during your daily grind

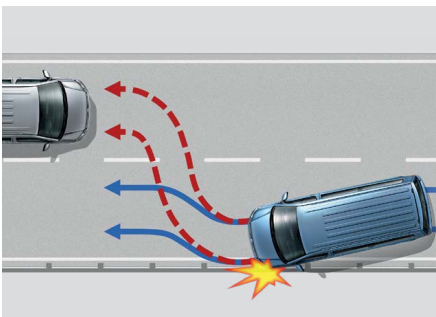
Intuitive driver assist systems help keep you safe while you focus on the next goal. These systems include crosswind and park distance Control, Post-collision Braking System and Tyre Pressure Monitor. These systems make it easier to take control in critical situations.



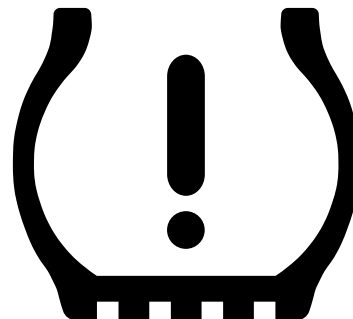
Crosswind Assist. Crosswind assist detects track offset caused by strong crosswinds in time and thus helps the driver to remain in their lane. A sudden track offset of the vehicle can cause improper steering directions for the driver. That's why crosswind assist corrects the course of the vehicle automatically from a speed of 80 km/h without the driver being aware of it. The track offset is significantly reduced, and the influence of the crosswind blasts is largely balanced out or reduced.



Park Distance Control. Park distance control at the front and rear helps make parking easier. When reverse is engaged, the vehicle alerts you with visual and audible warnings if you get too close to other vehicles, pillars, walls or pedestrians.



Post-collision Braking System. The Kombi 6.1 features an advanced safety system that brakes automatically after a collision to prevent a second impact. After a short delay, the vehicle begins a phased braking action down to 9.66 km/h during which time the driver can take over at any point.



Tyre pressure monitoring system. Displays the current pressure for every tyre and warns of deviations from the set pressure.



LED headlights. Keep a constant, close eye on what's ahead. Even if you travel at night, the Kombi 6.1 is always the ideal companion. Especially if it's fitted with LED headlights which feature a long light beam and high lighting volume for the best possible visibility and a safe arrival.



Rear-view camera. The standard rear-view camera gives you an optimised view of the area behind your vehicle. The system integrates the screen into the media system which helps you navigate a safe route when reversing.

Colours

Metallic paint finishes



Reflex Silver



Fortana Red



Starlight Blue



Ravenna Blue



Indium Grey



Mojave Beige

Pearl-Effect paint finishes



Deep Black

Solid paint finishes



Candy White



Ascot Grey



Cherry Red



Pure Grey

'Heritage' dual-colour paint



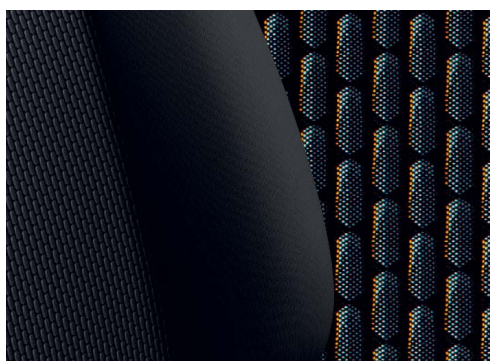
Reflex Silver/ Starlight Blue

*Availability of exterior paint finishes will vary from images shown.

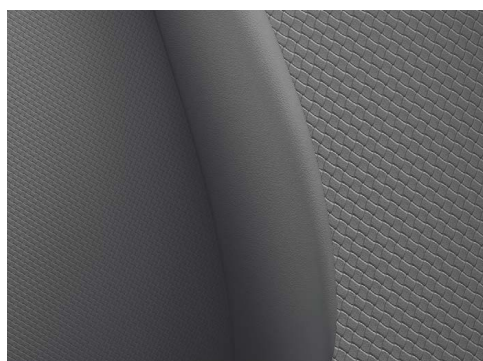


Local vehicle specifications may differ from model shown.

Seat Upholstery



"Bricks" cloth in Titanium Black



"Mesh" leather in Palladium

Please note: Not all upholstery combinations can be ordered together, and, in some instances, certain combinations may incur extra cost.

Wheels



"Clayton Silver"
Trendline 81kW
alloy wheel 16"
(Standard)



"Devonport Silver"
Trendline 110kW
alloy wheel 17"
(Standard)



"Aracaju Black diamond-turned"
Trendline Plus 146kW
alloy wheel 17"
(Standard)



"Woodstock Black diamond - turned"
Trendline Plus 146kW only
alloy wheel
(Optional on 146kW)

Alloy Wheels available in 16" and 17" Alloy on the Kombi Range

Options



Local vehicle specifications may differ from model shown.

Safety systems

- Trailer manoeuvring system with park distance control in front and rear
- Rear-view camera system (dynamic lines)
- Lane change system side assist
- Cruise control system including speed limiter

Exterior

- Metallic paint
- 'Heritage' dual-colour paint
- Lights & Vision package
- Front fog lights
- LED headlamps and LED rear position lamps with headlamp washer system
- Radio-Navigation system Discover Pro with Digital Cockpit

Load compartment, passenger compartment and load platform

- Carpet floor covering for cab and in passenger compartment
- Leatherette 'Mesh' Titanium Black



This information was effective as at July 2023
valid for model year 24 and is subject to change
without notice.

Visit us at vw.co.za
©Volkswagen South Africa